



19'-4" ceiling heights

offices: 4

workstations: 112

conf rooms: 5

town hall

secondary reception

floor headcount: 116

2

430 W. 15th Street





22'-5" ceiling heights

offices: 5

workstations: 111

conf rooms: 5

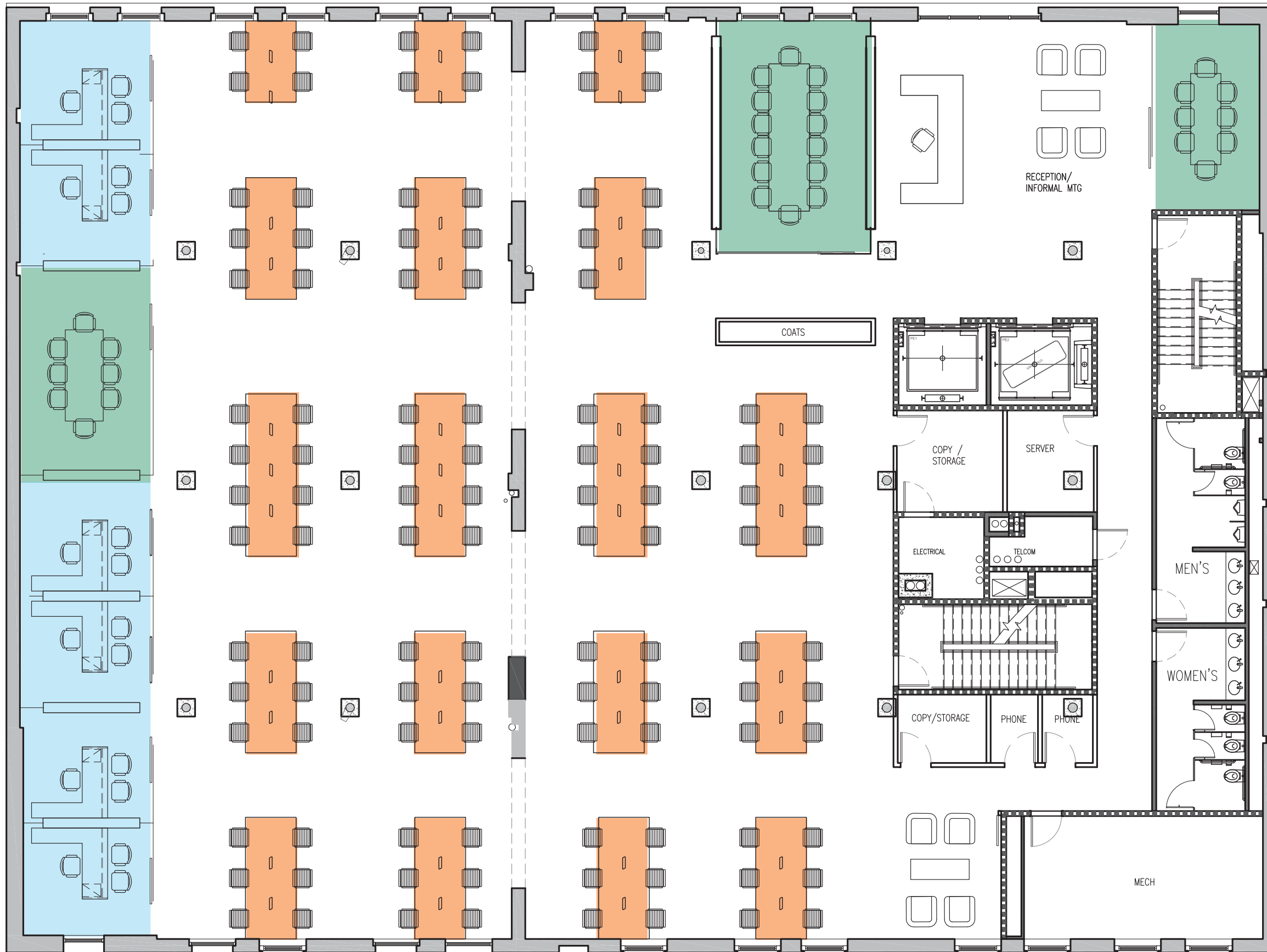
open meeting: 2

floor headcount: 116

3

430 W. 15th Street





12'-8" ceiling heights

offices: 6

workstations: 110

conf rooms: 3

open meeting: 1

floor headcount: 116

# 4A

430 W. 15th Street





12'-8" ceiling heights

offices: 12

workstations: 104

conf rooms: 3

open meeting: 2

floor headcount: 116

# 4B

430 W. 15th Street





12'-8" ceiling heights

offices: 16

workstations: 81

conf rooms: 3

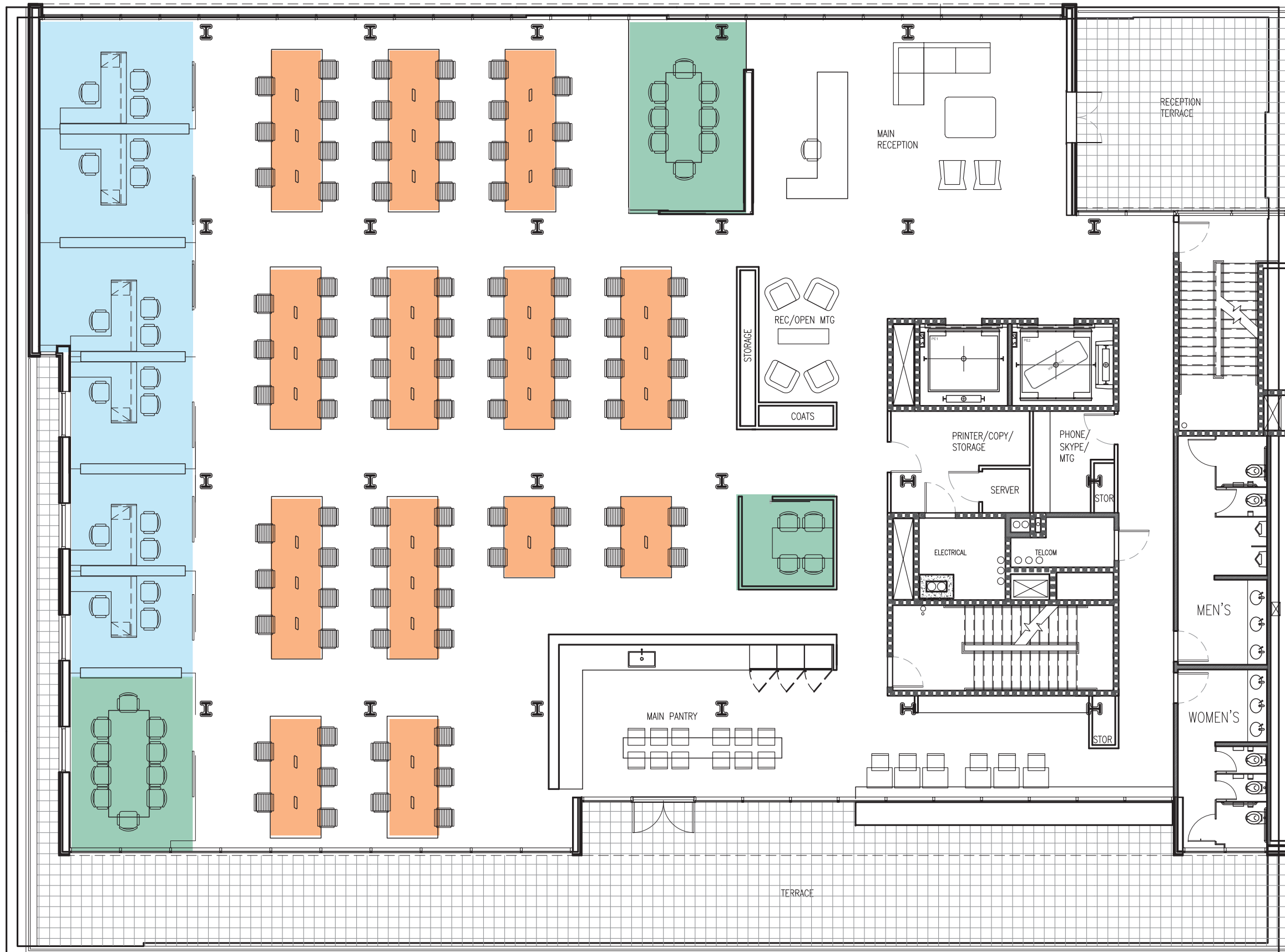
open meeting: 1

floor headcount: 97

# 4C

430 W. 15th Street





15'-6" ceiling heights  
Terrace space

offices: 6   
workstations: 87

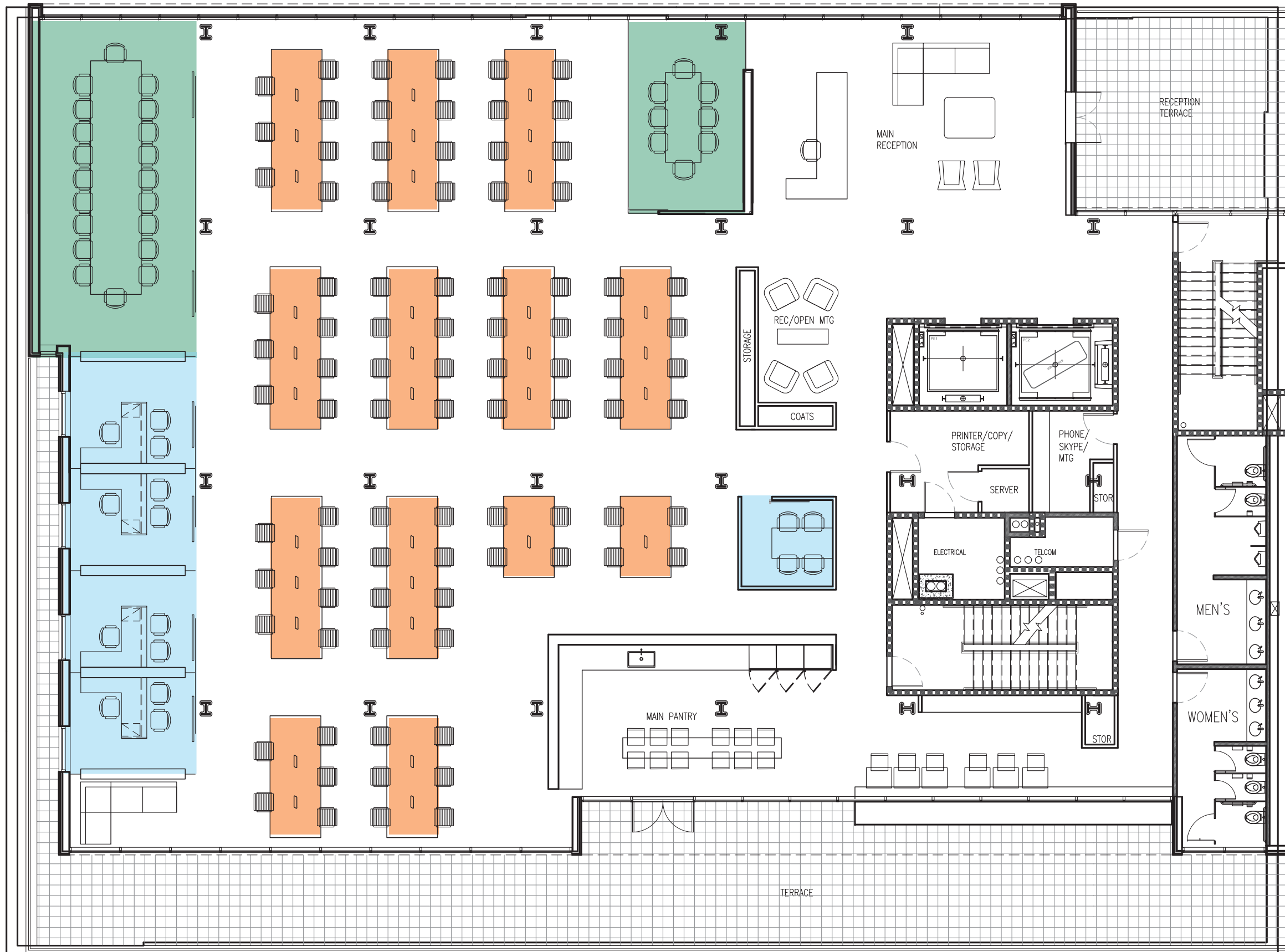
conf rooms: 3   
open meeting: 1  
main reception  
main pantry

floor headcount: 93

# 5A

430 W. 15th Street





15'-6" ceiling heights  
Terrace space

offices: 4   
workstations: 89

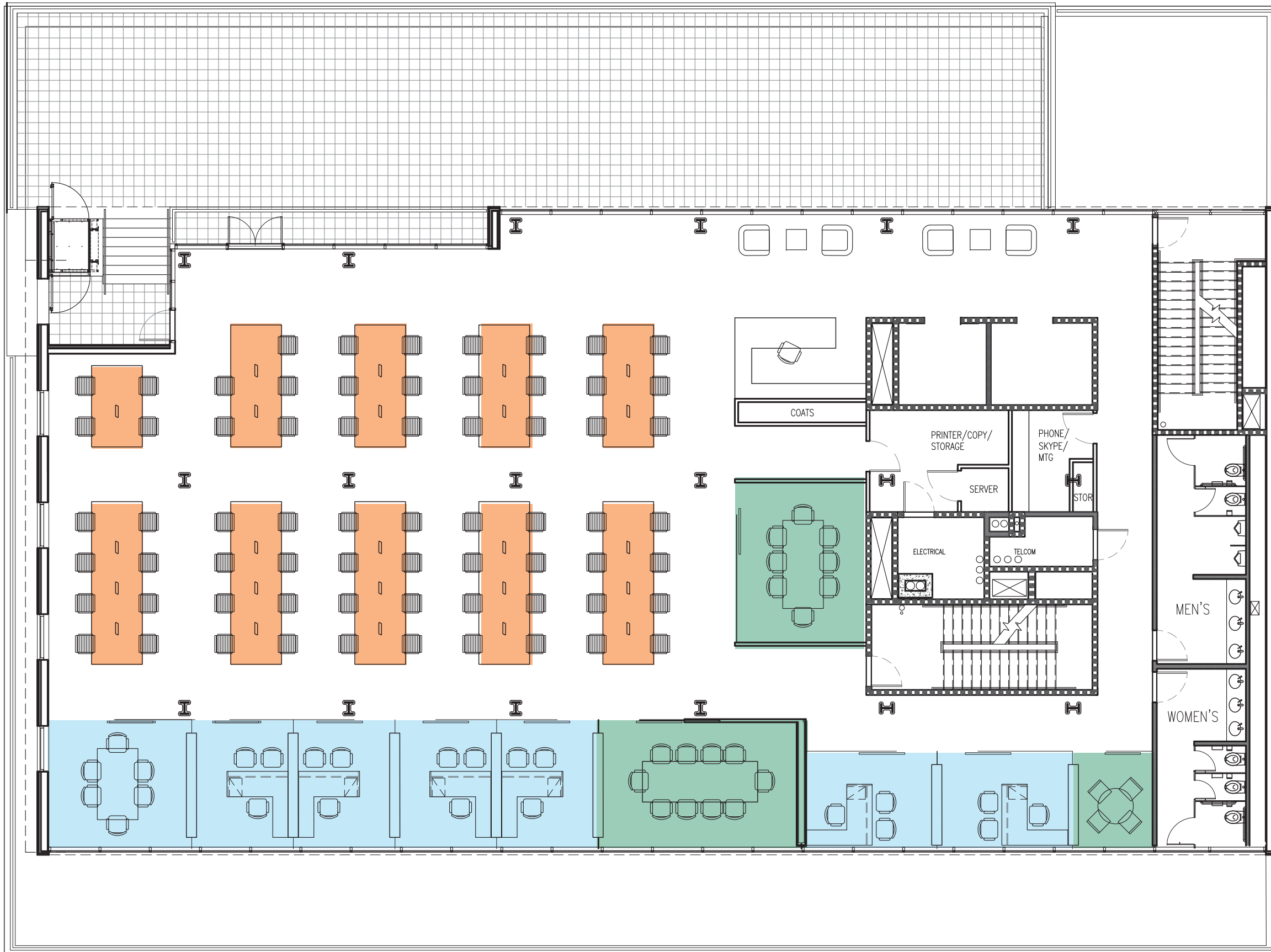
conf rooms: 3   
open meeting: 2  
main reception  
main pantry

floor headcount: 93

# 5B

430 W. 15th Street





15'-6" ceiling heights  
Terrace space

offices: 6   
workstations: 68

conf rooms: 3   
open meeting: 1

floor headcount: 74

# 6



15'-6" ceiling heights  
Terrace space

offices: 6   
workstations: 67

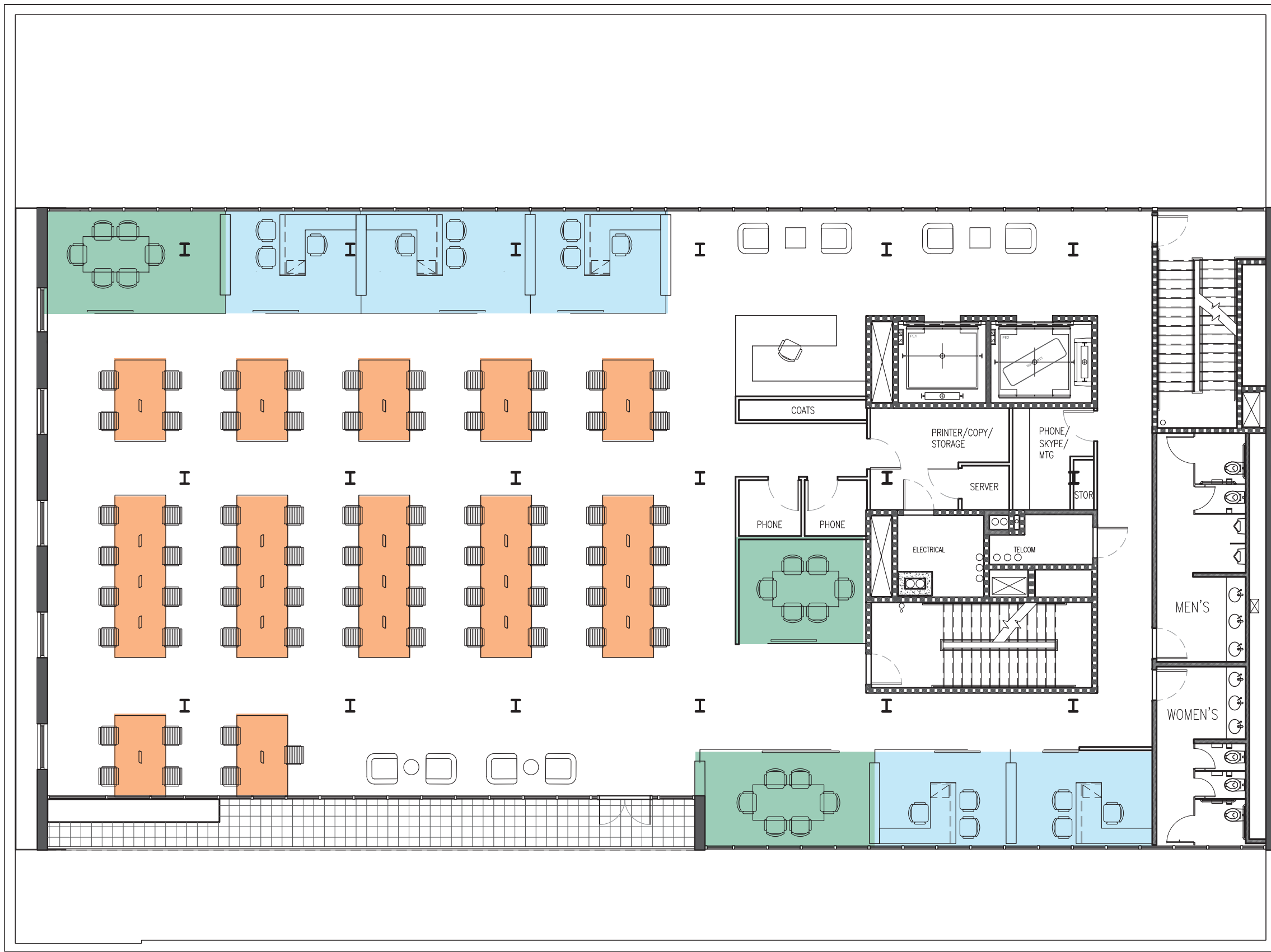
conf rooms: 3   
open meeting: 2

floor headcount: 73

# 7A

430 W. 15th Street





15'-6" ceiling heights  
Terrace space

offices: 5   
workstations: 68

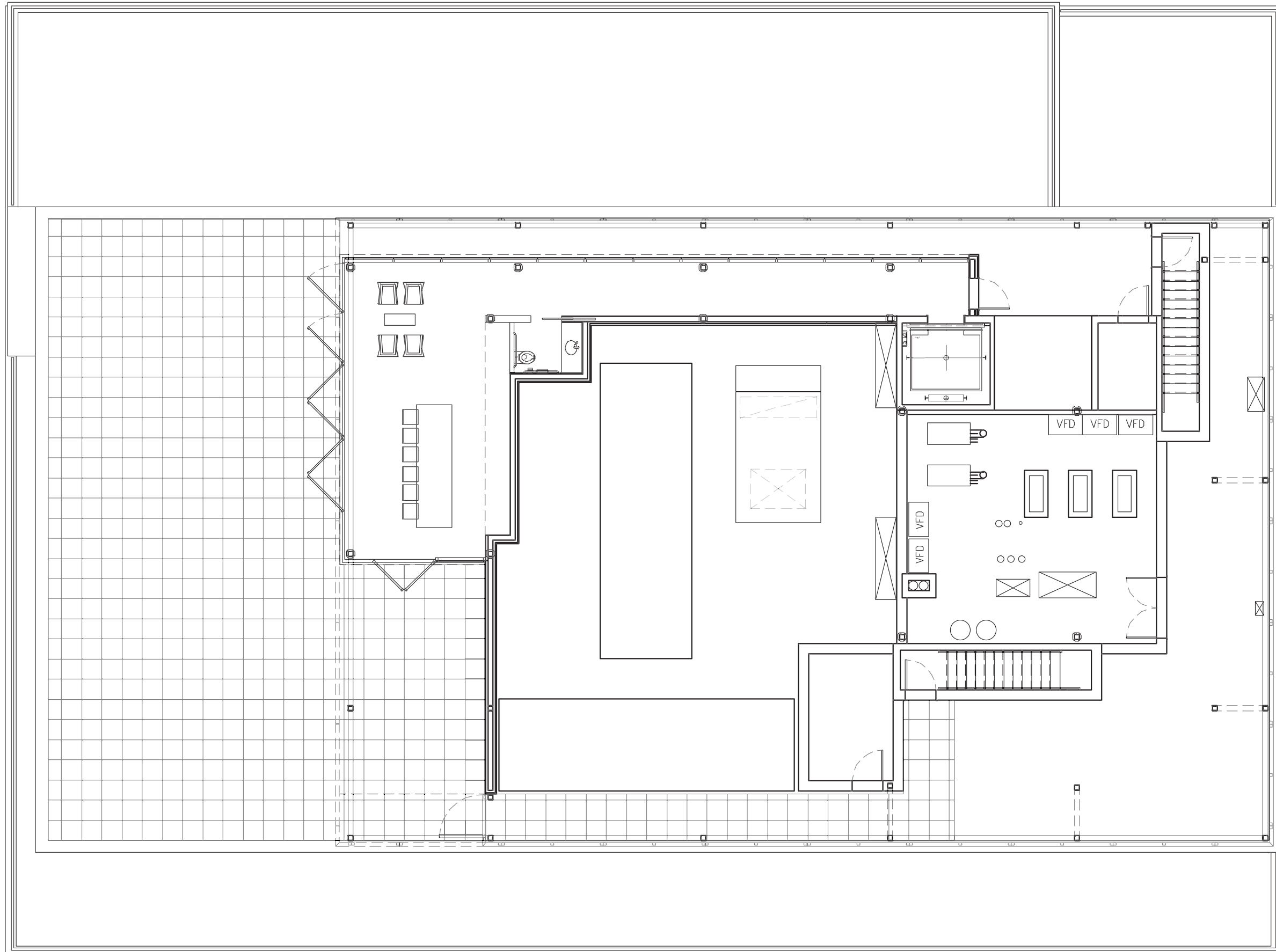
conf rooms: 3   
open meeting: 2

floor headcount: 73

# 7B

430 W. 15th Street





10' ceiling heights  
Terrace

R

430 W. 15th Street

